



**LMDE Conference, Athens, June 19-20, 2023**  
**Final Program Overview**

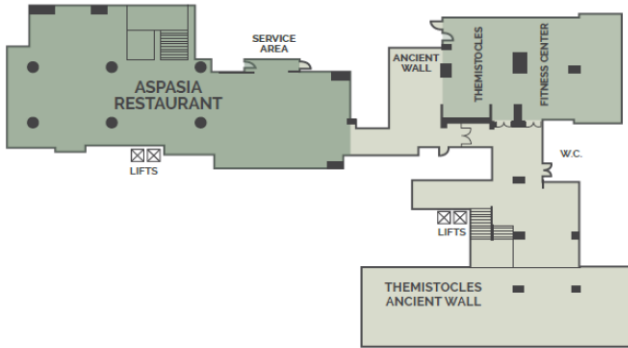
<b>Sunday, June 18, 2023</b>	
17.00-19.30- Registrations (Hotel Lobby)	

<b>DAY 1 - June 19</b>		<b>DAY 1: MONDAY JUNE 19, 2023</b>					
08.00-08.30		8.00-8.30- Registrations (Hotel Lobby)					
		<b>Plenary presentations</b>		<b>Parallel sessions</b>			
<i>Conference Rooms:</i>		<i>Erechthion (Mezzanine floor)</i>	<i>Aristotelis A (Ground floor)</i>	<i>Aristotelis B (Ground floor)</i>	<i>Erechthion (Mezzanine floor)</i>	<i>Themistocles (-1 floor)</i>	
08.30-09.00		<b>Welcome addresses</b>					
09.00-10.15		<b>Keynote Speakers</b>					
10.15-10.30		<b>Coffee break (Hotel Lobby)</b>					
Parallel Sessions 1 10.30-12.00		<b>A1</b>	<b>D1</b>	<b>C1</b>	<b>B1</b>	<b>Poster Papers (lobby of Aristotelis A)</b>	
		Digital Saviness and Upskilling	Leading Change in Business Schools	Technology & Social Welfare in the Digital Era	Innovations in Manufacturing		
12.00-13.00		<b>Lunch (Aspasia Restaurant / -1 floor)</b>					
13.00-14.30		<b>Plenary Panel:</b> Harnessing new technology for environmentally sustainable business: trends for the future of business education					
Parallel Sessions 2 14.30-15.30		<b>A2</b>	<b>C2</b>	<b>B2</b>	<b>D2</b>		
		Leadership in the Digital Era	Online Health Provision in the Digital Era	Educating Marketers for the Digital Era - A Panel Discussion	Climate Risk: Implications for Financial Policies		
15.30-16.00		<b>Coffee break (Hotel Lobby) and Poster Session (in the lobby of Aristotelis A room, Ground floor)</b>					
Parallel Sessions 3 16.00-18.00		<b>A3</b>	<b>C3</b>	<b>D3</b>	<b>B3</b>		
		The Influence of Technology on HR Decision Making	Public Policy Issues in the Digital Era	Emerging Technologies and Innovation Challenges and Opportunities for Management Research - A Panel Discussion	Enabling Technologies for Operations Management in the Digital Era		
20.00-23.00		<b>Dinner (Acropolis Secret Roof Garden)</b>					

<b>DAY 2 - June 20</b>		<b>DAY 2: TUESDAY JUNE 20, 2023</b>					
		<b>Plenary presentations</b>		<b>Parallel sessions</b>			
<i>Conference Rooms:</i>		<i>Erechthion (Mezzanine floor)</i>	<i>Aristotelis A (Ground floor)</i>	<i>Aristotelis B (Ground floor)</i>	<i>Erechthion (Mezzanine floor)</i>	<i>Themistocles (-1 floor)</i>	
09.00-10.15		<b>Keynote Speakers</b>					
10.15-10.30		<b>Coffee break (Hotel Lobby)</b>					
Parallel Sessions 4 10.30-12.00		<b>A4</b>	<b>D4</b>	<b>C4</b>	<b>B4</b>	<b>Poster Papers (lobby of Aristotelis A)</b>	
		Remote Work & Work-Life Balance in the Digital Era	Generative AI: Disrupting Knowledge Creation and Learning	Organizational Transformation and Innovation	Digital Technology as a Game Changer for Marketing		
12.00-13.00		<b>Lunch (Aspasia Restaurant / -1 floor)</b>					
13.00-14.30		<b>Plenary Panel:</b> Transforming people and organizations - An Industry Panel Discussion					
Parallel Sessions 5 14.30-16.00pm		<b>A5</b>	<b>B5</b>	<b>C5</b>	<b>D5</b>		
		Microfoundations of a High Performing Workforce	Curricular Innovations in B-Schools	Start-ups, Scale-ups, Entrepreneurship, and Tech-Innovation: Research Challenges and Practical Implications for Business Schools	Fintech: Algorithms, Innovations & Policies		
16.00-16.30pm		<b>Coffee break (Hotel Lobby) and Poster Session (in the lobby of Aristotelis A room, Ground floor)</b>					
Parallel Sessions 6 16.30-17.45pm		<b>A6</b>	<b>B6</b>	<b>D6</b>	<b>C6</b>		
		Pressing HR Challenges in the Digital Era	Marketing in the Digital Era: AI and Personal Selling	Broadening and Deepening DEI Research - A Panel Discussion	Sports Management and Analytics in the Digital Era		
17.45-18.00pm		<b>Closing of the Conference</b>					

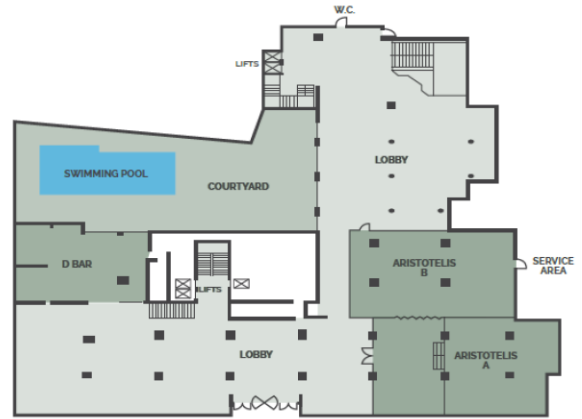
### -1 FLOOR

Total Floor Capacity: 800 m<sup>2</sup> / 957 yd<sup>2</sup>



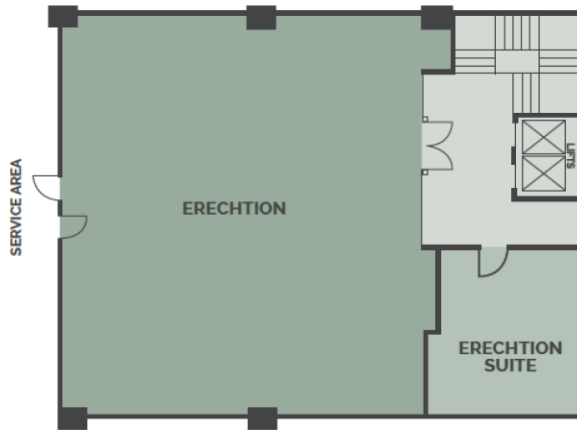
### GROUND FLOOR

Total Floor Capacity: 800 m<sup>2</sup> / 957 yd<sup>2</sup>



### MEZZANINE FLOOR

Total Floor Capacity: 195 m<sup>2</sup> / 233 yd<sup>2</sup>



### ROOF GARDEN

Total Floor Capacity: 330 m<sup>2</sup> / 394 yd<sup>2</sup>

